

在2005/06年度，監管局於扣除資本項目開支後，錄得509萬元盈餘。（2004/05年度的盈餘是510萬元）。

本年度，監管局的總收入為5,300萬元，較上年度增加1,036萬元。收入增加的主要原因是由於地產市場持續增長，參加資格考試及申請牌照加入地產代理行業的人數上升。隨著報考人數激增，以及持牌人數錄得新高，來自考試費及牌照費的收入亦大幅增長。此外，監管局存款的利息收入亦由於利率上調而有所提升。

本年度的經常性開支為4,792萬元，較上年度增加1,038萬元，部分原因是員工數目由62人增加至70人，以加強發牌及考試服務、推行持續專業進修計劃、處理大量投訴及紀律研訊個案，以及加強新樓盤的巡查。開支明顯增加的其他項目包括公眾教育、培訓活動與考試行政費用。

為了吸引及挽留人才，監管局於2006年1月進行了薪酬調整。（主任及以下級別薪酬增幅為5.3%，其餘職位的增幅為2%。）

截至2006年3月31日，扣除訴訟均衡儲備的撥備額後，監管局的累積盈餘為5,197萬元。

監管局的行政架構由行政總裁領導。於2006年3月31日，監管局的職員編制為70人。

In 2005/06, EAA recorded a surplus of \$5.09 million after capital project expenses, compared to \$5.10 million in 2004/05.

Total income for the year was \$53.00 million, an increase of \$10.36 million over the previous year. The continuing growth of the real estate market encouraged more people to take qualifying examinations and apply for licences to join the estate agency trade. With the surge in examination candidates and the number of individual licensees reaching a record high, income from both examination fees and licence fees increased substantially. Income also rose due to higher interest rates on EAA's deposits.

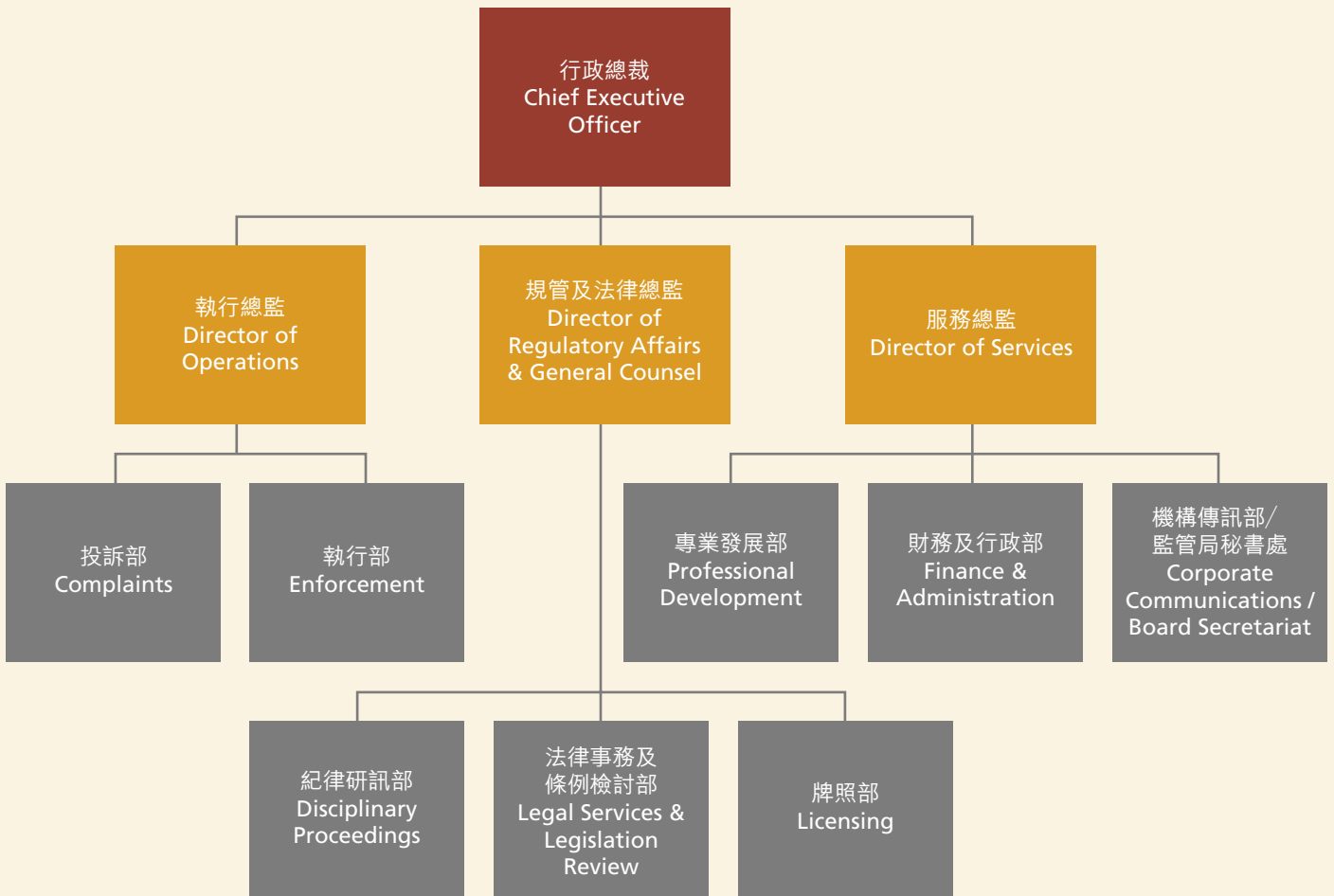
Recurrent expenditure for the year came to \$47.92 million, an increase of \$10.38 million over the previous year. This was partly due to the expansion of staff establishment, with personnel increasing from 62 to 70 to meet the rising demand for licensing and examination services, to launch the Continuing Professional Development Scheme, to handle the surge in complaints and inquiry hearings, and to step up compliance inspections particularly at first-sale sites. Other items that saw major increases in expenditure were community education expenses, training activity expenses and service fees for examinations.

There was a pay adjustment, with effect from January 2006, to attract and retain quality employees (Officer level and below received a 5.3% increase and other posts received 2%).

As at 31 March 2006, the Authority's cumulative surplus stood at \$51.97 million after appropriation to the Litigation Equalisation Reserve.

The EAA Administration is led by the Chief Executive Officer. As at 31 March 2006, the staff establishment of the Authority was 70.

地產代理監管局行政部門組織架構圖
Organisation Chart of Estate Agents Authority Administration



總監級以下的編制

Non-Directorate Staff Establishment

職級	Rank	人數 Number
法律顧問	Legal Counsel	3
經理/助理法律顧問	Manager / Assistant Legal Counsel	7
助理經理	Assistant Manager	10
高級主任	Senior Officer	7
主任	Officer	8
行政助理	Administrative Assistant	6
高級文員	Senior Clerk	14
文員	Clerk	10
辦公室助理	Office Assistant	1